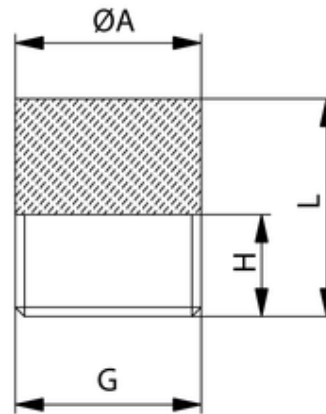


ST

Schalldämpfer
Silencer

Material: Sinterbronze & Messing
 Filterfeinheit: 36 μ
 Betriebsdruck: max. 10 bar
 Betriebstemperatur: -10°C bis +70°C
 zyl. Gewinde: DIN EN ISO 228

material: sintered bronze & brass
 filter mesh: 36 μ
 working pressure: max. 10 bar
 working temperature: -10°C up to +70°C
 cyl. threads: DIN EN ISO 228



| ITV | G | ØA | H | L |
|--------|------|----|---|----|
| 303083 | G1/4 | 13 | 6 | 13 |