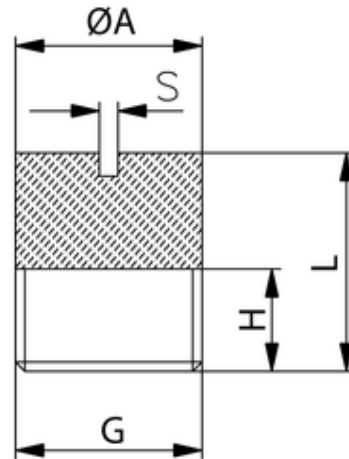


STTSchalldämpfer
Silencer

Material: Sinterbronze & Messing
 Filterfeinheit: 36 μ
 Betriebsdruck: max. 10 bar
 Betriebstemperatur: -10°C bis +70°C
 zyl. Gewinde: DIN EN ISO 228

material: sintered bronze & brass
 filter mesh: 36 μ
 working pressure: max. 10 bar
 working temperature: -10°C up to +70°C
 cyl. threads: DIN EN ISO 228



<i>ITV</i>	<i>G</i>	<i>ØA</i>	<i>H</i>	<i>L</i>	<i>S</i>
303093	G1/4	13	6	15	1,5