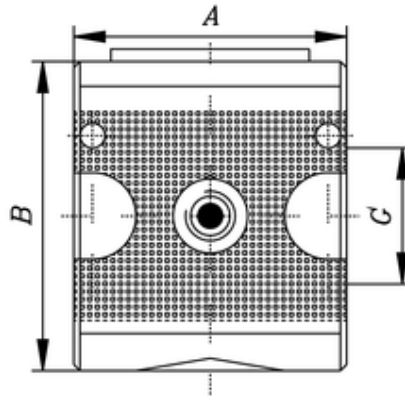


# Anfahrventil

Starting valve

Valvola di partenza



| ITV    | G    | NI/min | A  | B   |
|--------|------|--------|----|-----|
| 122801 | G1/4 | 900    | 48 | 157 |

|                            |                         |
|----------------------------|-------------------------|
| max. Betriebsdruck         | 16 bar                  |
| max. Inlet pressure        | 16 bar                  |
| Pressione max di ingresso  | 16 bar                  |
| max. Ausgangsdruck         | 50 % PE                 |
| Outlet pressure max.       | 50 % PE                 |
| Pressione max. di uscita   | 50 % PE                 |
| max. Temperatur bei 10 bar | +60 °C                  |
| max. temperature at 10 bar | +60 °C                  |
| Temperatura max. a 10 bar  | +60 °C                  |
| Einbauposition             | beliebig                |
| Mounting position          | any position            |
| Posizione di montaggio     | in qualsiasi posizione  |
| Befestigung                | Winkel oder 2 Bohrungen |
| Fortify                    | elbow or 2 drillings    |
| Fissaggio                  | staffa o 2 fori         |