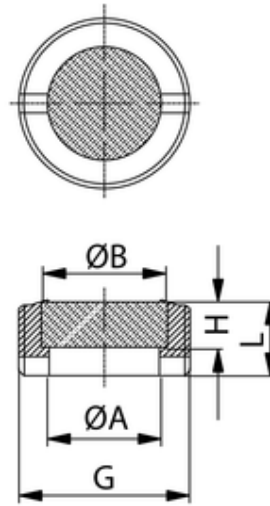
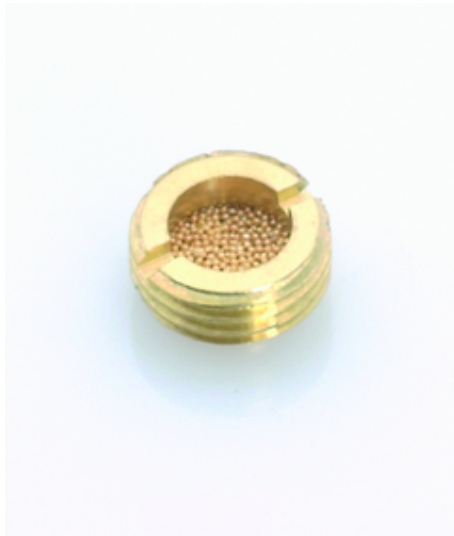


SP

Schalldämpfer
Silencer

Material:
Körper: Messing
Filter: Sinterbronze
Filterfeinheit: 36 μ
Betriebsdruck: max. 12 bar
Betriebstemperatur: -10°C bis +80°C
zyl. Gewinde: DIN EN ISO 228

material:
body: brass
filter: sintered bronze
filter mesh: 36 μ
working pressure: max. 10 bar
working temperature: -10°C to +80°C
cyl. threads: DIN EN ISO 228



<i>ITV</i>	<i>G</i>	<i>ØB</i>	<i>ØA</i>	<i>L</i>	<i>H</i>
303075	G1/2	15	12	8	4