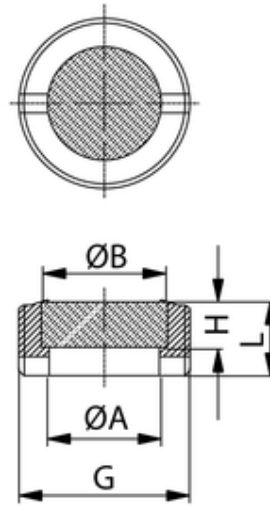
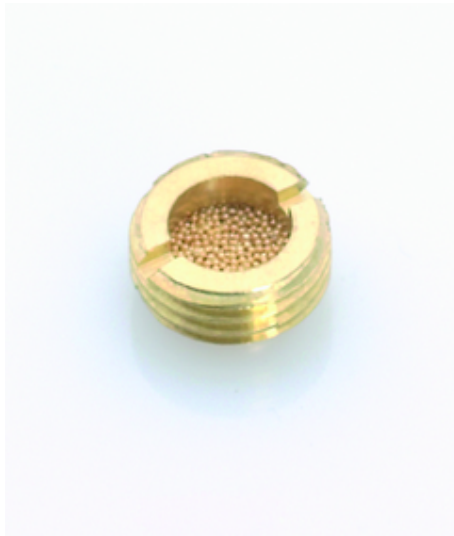


SPSchalldämpfer
Silencer

Material:
 Körper: Messing
 Filter: Sinterbronze
 Filterfeinheit: 36 μ
 Betriebsdruck: max. 12 bar
 Betriebstemperatur: -10°C bis +80°C
 zyl. Gewinde: DIN EN ISO 228

material:
 body: brass
 filter: sintered bronze
 filter mesh: 36 μ
 working pressure: max. 10 bar
 working temperature: -10°C to +80°C
 cyl. threads: DIN EN ISO 228



<i>ITV</i>	<i>G</i>	<i>ØB</i>	<i>ØA</i>	<i>L</i>	<i>H</i>
303077	G1	26	23	10	4