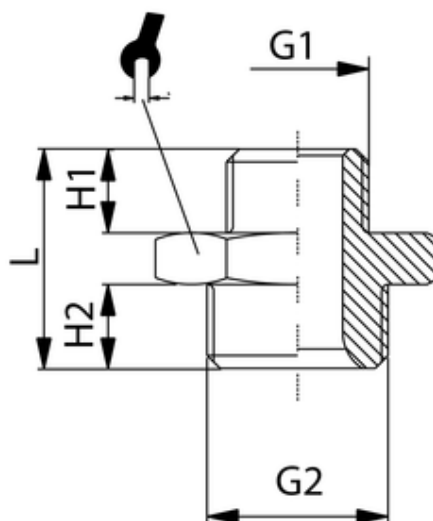


Doppelnippel, zylindrisch

Doppelnippel, zylindrisch
Double nipple, cylindrical
Nipplo cilindrico, M.M.



ITV	G1	G2	L	H1	H2	sw
401510	G3/8	G3/4	24	9	10	27

Betriebstemperatur:	max. 150°C
Betriebsdruck:	bis 60bar
Werkstoff:	Messing vernickelt/ blank CW614N und CW617N
Gewinde:	zyl. Gewinde DIN 3852 kon. Gewinde DIN 3858
Medium:	Luft, Wasser, Öl, Dampf, etc.

Operating temperature:	max. 150°C
Operating pressure:	up to 60bar
Material:	brass nickel-plated/ polished CW614N and CW617N
Thread:	cyl. thread DIN 3852 con. thread DIN 3858
Medium:	Air, water, oil, steam, etc.