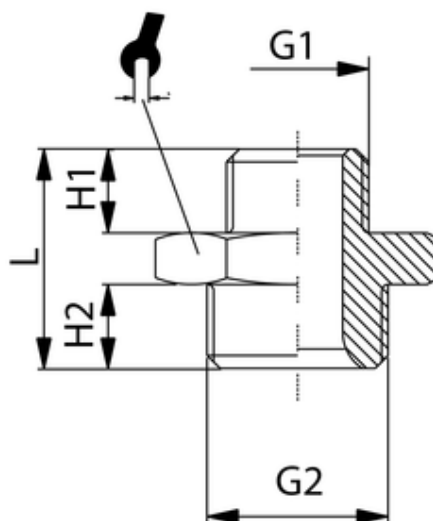


# Doppelnippel, zylindrisch

Doppelnippel, zylindrisch  
 Double nipple, cylindrical  
 Nipplo cilindrico, M.M.



ITV	G1	G2	L	H1	H2	sw
401522	G1 1/2	G1 1/2	39	17	17	48

<b>Betriebstemperatur:</b>	max. 150°C	
<b>Betriebsdruck:</b>	bis 60bar	
<b>Werkstoff:</b>	Messing vernickelt/ blank	CW614N und CW617N
<b>Gewinde:</b>	zyl. Gewinde DIN 3852 kon. Gewinde DIN 3858	
<b>Medium:</b>	Luft, Wasser, Öl, Dampf, etc.	

<b>Operating temperature:</b>	max. 150°C	
<b>Operating pressure:</b>	up to 60bar	
<b>Material:</b>	brass nickel-plated/ polished	CW614N and CW617N
<b>Thread:</b>	cyl. thread DIN 3852 con. thread DIN 3858	
<b>Medium:</b>	Air, water, oil, steam, etc.	