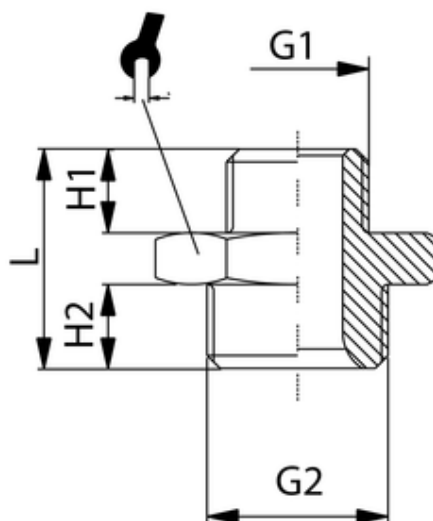


Doppelnippel, zylindrisch

Doppelnippel, zylindrisch
 Double nipple, cylindrical
 Nipplo cilindrico, M.M.



ITV	G1	G2	L	H1	H2	sw
401523	G1 1/2	G2	44	18	20,5	60

Betriebstemperatur:	max. 150°C	
Betriebsdruck:	bis 60bar	
Werkstoff:	Messing vernickelt/ blank	CW614N und CW617N
Gewinde:	zyl. Gewinde DIN 3852 kon. Gewinde DIN 3858	
Medium:	Luft, Wasser, Öl, Dampf, etc.	

Operating temperature:	max. 150°C	
Operating pressure:	up to 60bar	
Material:	brass nickel-plated/ polished	CW614N and CW617N
Thread:	cyl. thread DIN 3852 con. thread DIN 3858	
Medium:	Air, water, oil, steam, etc.	