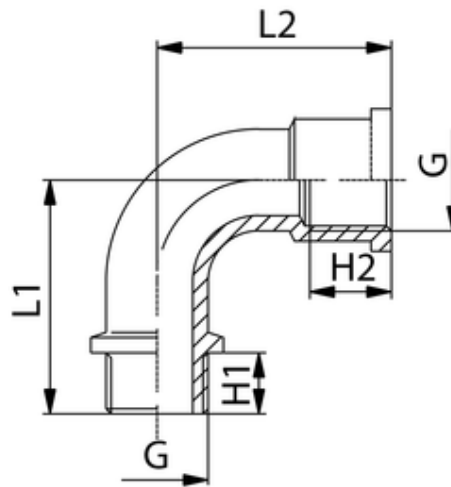


Winkel 90°

Innen-Außen, blank
Male-female elbow, uncoated
Gomito M.F., giallo



ITV	G	H2	L2	H1	L1
401644	G3/8	10,5	26	10	29,5

Betriebstemperatur:	max. 150°C	
Betriebsdruck:	bis 60bar	
Werkstoff:	Messing vernickelt/ blank	CW614N und CW617N
Gewinde:	zyl. Gewinde DIN 3852 kon. Gewinde DIN 3858	
Medium:	Luft, Wasser, Öl, Dampf, etc.	

Operating temperature:	max. 150°C	
Operating pressure:	up to 60bar	
Material:	brass nickel-plated/ polished CW614N and CW617N	
Thread:	cyl. thread DIN 3852 con. thread DIN 3858	
Medium:	Air, water, oil, steam, etc.	