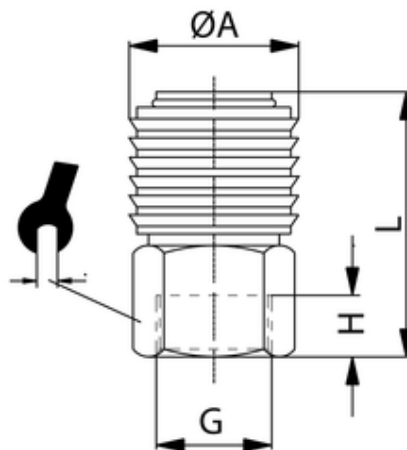


Einhandkupplung

Innengewinde
Coupling female
Rubinetto rapido femmina



| ITV | DN | G | H | ØA | L | sw |
|--------|----|------|---|----|----|----|
| 430213 | 5 | G1/4 | 9 | 16 | 38 | 17 |

| | |
|---------------------------|-----------------------|
| Körper: | Messing |
| Body: | brass |
| Corpo: | ottone |
| Federn, Sicherungsringe: | Edelstahl |
| Spring, snap rings: | inox |
| Molla, anello: | inox |
| Dichtungen: | Perbunan |
| Sealing: | perbunan |
| Guarnizioni: | perbunan |
| Betriebstemperatur: | -20 °C bis +100 °C |
| Working temperature: | -20 °C to +100 °C |
| Temperatura di esercizio: | da -20 °C a +100 °C |
| Betriebsdruck: | max. 35 bar |
| Working pressure: | max. 35 bar |
| Pressione di esercizio: | max. 35 bar |
| Medium: | Druckluft, Wasser |
| Medium: | compressed air, water |
| Fluido: | Aria compressa, acqua |
| zyl. Gewinde: | DIN EN ISO 228 |
| cyl. threads: | DIN EN ISO 228 |
| Filettatura: | DIN EN ISO 228 |