

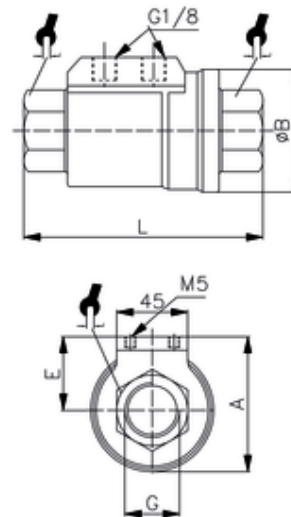
Sperrventil

pneumatisch gesteuert
Pneumatic operated blocking valve (double effect)

Betriebstemperatur - operating temperature
Gehäuse - body:
Kolben - piston:
Dichtung - seal:
O-Ring - o-ring:
Zylindrisches Gewinde - zyl. thread:
Medien - media:
Steuermedien - control media:
Steuerdruck - air supply:

-20°C bis +80°C
Messing, vernickelt
Messing, vernickelt
NBR
NBR
ISO 7/1
Luft, Gas, Öle, Wasser
gefilterte Druckluft
4,2 - 8 bar

-20°C to +80°C
Brass, nickel-plated
Brass, nickel-plated
NBR
NBR
ISO 7/1
Air, gas, oil, water
filtered, compressed air
4,2 - 8 bar



ITV	G	DN	A	ØB	L	E	P	SW
580004	Rp3/8	10	53,8	46	98	30,8	10	22

*P = Druck / pressure [bar]