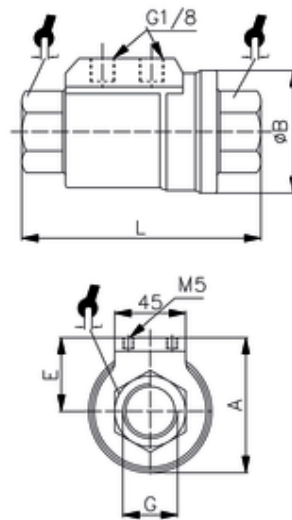


Sperrventil

pneumatisch gesteuert
Pneumatic operated blocking valve (double effect)
 Valvola VIPazionata pneumaticamente doppio effetto



ITV	G	DN	A	ØB	L	E	P*	sw
580005	Rp1/2	15	60	51,7	112	33,3	10	27

Betriebstemperatur:	-20 °C bis +80 °C
Operating temperature:	-20 °C to +80 °C
Temperatura di esercizio:	da -20 °C a +80 °C
Steuerdruck:	4,2 - 8 bar
Air supply:	4,2 - 8 bar
Alimentazione dell'aria:	4,2 - 8 bar
Körper/Kolben:	Messing vernickelt
Body/piston:	brass nickel-plated
Corpo/pistone:	ottone nichelato
Dichtung/O-Ring:	NBR
Seal/O-ring:	NBR
Guarnizione:	NBR
Gewinde:	ISO 7/1
Thread:	ISO 7/1
Filettatura:	ISO 7/1
Medien:	Luft, Gas, Öl, Wasser, gefilterte Druckluft.
Media:	Air, gas, oil, water, filtered compressed air.
Media:	Aria, gas, olio, acqua, acqua, aria compressa filtrata.