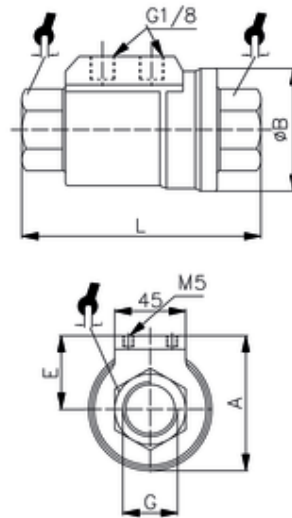


Sperrventil einfach wirkend

pneumatisch gesteuert (Ventil geschlossen)
 Pneumatic operated blocking valve (single effect)
 Valvola VIPazionata pneumaticamente effetto semplice



ITV	G	DN	A	ØB	L	E	P*	sw
580108	Rp1 1/4	32	91	86	165	48,25	10	50

Betriebstemperatur:	-20 °C bis +80 °C
Operating temperature:	-20 °C to +80 °C
Temperatura di esercizio:	da -20 °C a +80 °C
Steuerdruck:	4,2 - 8 bar
Air supply:	4,2 - 8 bar
Alimentazione dell'aria:	4,2 - 8 bar
Körper/Kolben:	Messing vernickelt
Body/piston:	brass nickel-plated
Corpo/pistone:	ottone nichelato
Dichtung/O-Ring:	NBR
Seal/O-ring:	NBR
Guarnizione:	NBR
Gewinde:	ISO 7/1
Thread:	ISO 7/1
Filettatura:	ISO 7/1
Medien:	Luft, Gas, Öl, Wasser, gefilterte Druckluft.
Media:	Air, gas, oil, water, filtered compressed air.
Media:	Aria, gas, olio, acqua, acqua, aria compressa filtrata.