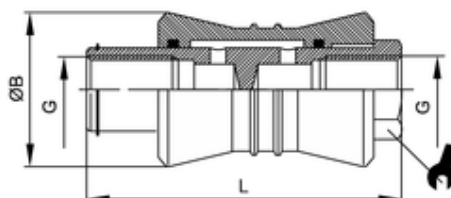


Handschiebeventil

Slide valve
Valvola a corsoio



ITV	G	ØB	L	sw	NI/min* 1	NI/min* 2
60603	G1/4	30	58	19	1500	2220

Körper:	CW614N vernickelt
Body:	CW614N nickel-plated
Corpo:	ottone CW617N nichelato
O-Ring:	NBR
O-ring:	NBR
O-Ring:	NBR 70 SH
zyl. Gewinde:	DIN EN ISO 228
cyl. Threads:	DIN EN ISO 228
Filettatura:	gas cilindrica ISO 228
Betriebstemperatur:	-10 °C bis +80 °C
Working temperature:	-10 °C up to +80 °C
Temperatura di esercizio:	da -10 °C a +80 °C
Betriebsdruck:	max. 10 bar
Working pressure:	max. 10 bar
Pressione di esercizio:	max. 10 bar

Für geölte und ungeölte Druckluft.
For lubricated and non-lubricated compressed air.
Per aria compressa sia lubrificata che non.

NI/min 1: P->A NI/min 2: A->R