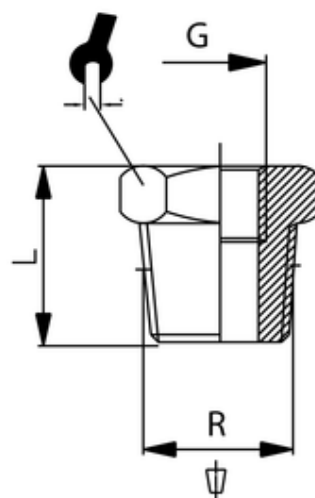


Reduzierung

Reducer
Riduzione M.F. conica



| ITV | R | G | L | SW |
|-------|--------|------|----|----|
| 82812 | R1 1/4 | G3/8 | 30 | 46 |

Betriebstemperatur: max. +200°C
Betriebsdruck: bis 16bar
Werkstoff: Edelstahl AISI 316
Gewinde: zyl. Gewinde DIN 3852
kon. Gewinde DIN 3858

Operating temperature: max. +200°C
Operating pressure: up to 16bar
Material: Stainless steel AISI 316
Thread: cyl. thread DIN 3852
con. thread DIN 3858